



sales@scintex.com.au | www.scintex.com.au
 Ph: (07) 3137 0135 | Fax: (07) 3041 0541
 ABN: 83 103 846 771

Pump Manual

12V 75LPM Vane Pump & Vane Pump Station SPEP12V75 & SP12VFS75



SPEP12V75

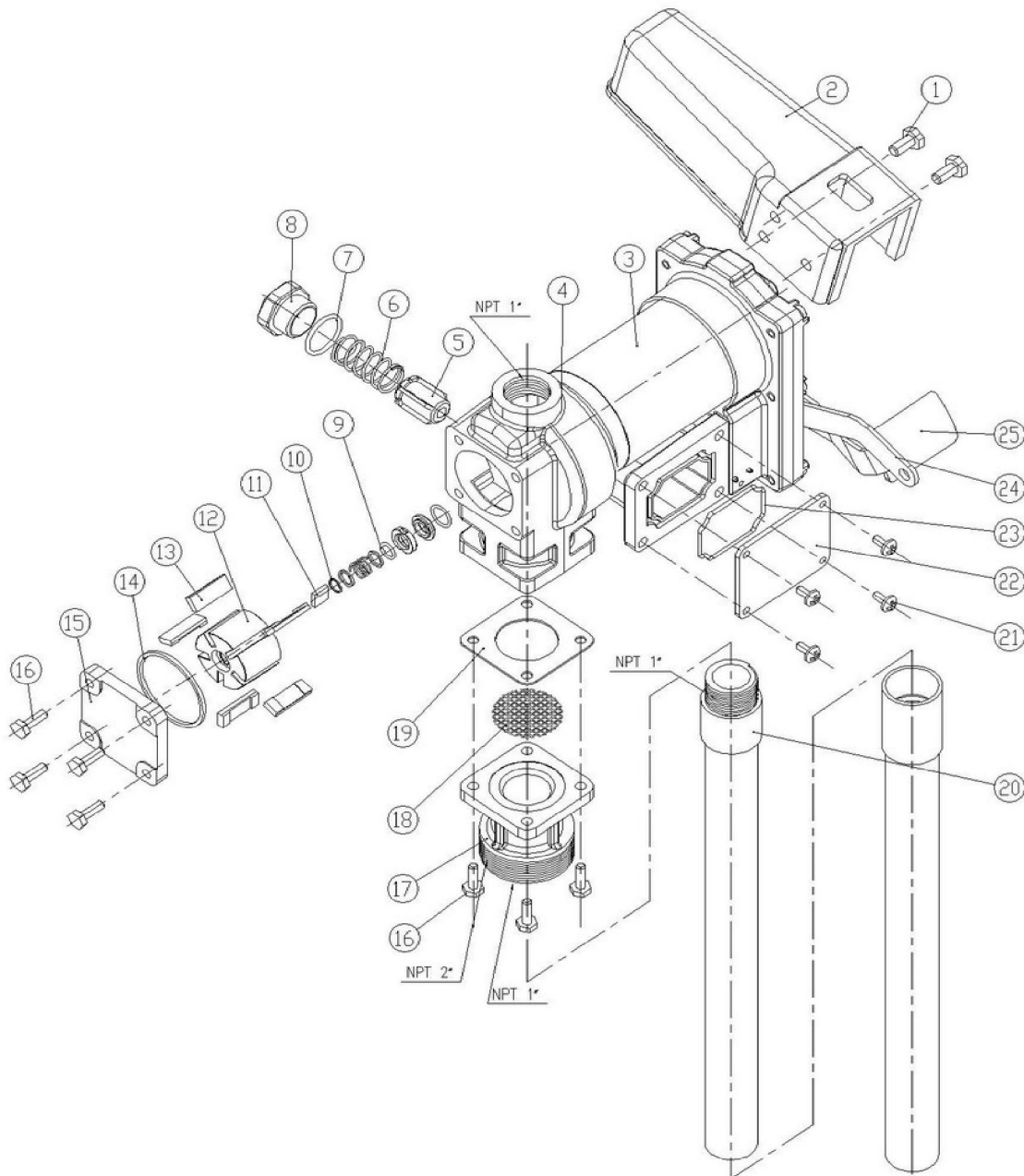


SP12VFS75

Parts List

No.	Part Name	QTY	No.	Part Name	QTY.
1	Screw M8×16	2	14	Ring	1
2	Nozzle Holder	1	15	Cover	1
3	Motor	1	16	Screw M6×20	8
4	Pump Body	1	17	Inlet Joint	1
5	Bypass Valve	1	18	Filter	1
6	Spring	1	19	Gasket	1
7	O-ring 26.5×2.65	1	20	Oil Pipe	-
8	Cover	1	21	Screw M5×12	4
9	Seals Assy.	1	22	Cover	1
10	End Ring 9	1	23	O-ring	1
11	Key	1	24	Upper Lever I	1
12	Rotor	1	25	Upper Lever 2	1

Exploded Pump View



Features:

Voltage: 12V

Power: 185 Watts

Duty Cycle: 30 Minutes

Flow Rate: 20 – 75LPM

Operating Pressure: 0.14MPA

Current Draw: ~15 A

Inlet / Outlet: 1" BSP

Drum Fitting: 2" BSP

Hose length: 4 meters

Other:

- Rain / Water proof
- Built in strainer and Bypass Valve
- Explosion proof permanent magnet motor
- Thermal Overload protection

Installation & Usage

- 1) Tightly screw in suction pipe or dip tube (not supplied) into the 1" inlet using teflon tape. Your inlet tube or dip tube should terminate ~3" from the bottom of the drum or container.
- 2) Securely attach the 4 meter discharge hose (supplied) to the outlet. Use Teflon tape.
- 3) Connect your 12V power supply by removing the electrical junction box cover and connecting you power leads (Black -ve, Red +ve). Using an M20 (not supplied) cable gland seal the power cables as they leave the rear of the pump.
- 4) Pump body should be earthed as per the instructions on the pump label.
- 5) The pump is turned On or OFF with the Upper and Lower levers. Move the Upper Lever to ON.
- 6) Keep the nozzle in contact with the drum being filled.

Warning:

- 1) The drum or container being filled should be earthed to prevent static discharge and possible fire or explosion. The discharge hose is not conductive and does not provide an earth.
- 2) Do not install additional foot valves or check valves that do not have a pressure relief valve.

Trouble Shooting

Q) The pump is working but is not delivering appropriate flow rate or flow rate is decreasing.

A) Possible hose or filter blockage or air leaks. Check all hoses and connections. Also check pump positioning, clean pump and check vanes are sliding easily.

Q) Pump fails to prime.

A) Check for air leaks in suction tube. Check bypass valve for grit or dirt.

Q) Motor hums or fails to start.

A) Pump motor may be bound. Remove cover and check rotor and vanes for dirt and make sure movement is free.

WARRANTY

Please check the Scintex website www.scintex.com.au for an up to date warranty policy. Pumps are covered by a 12 Month return to base warranty.