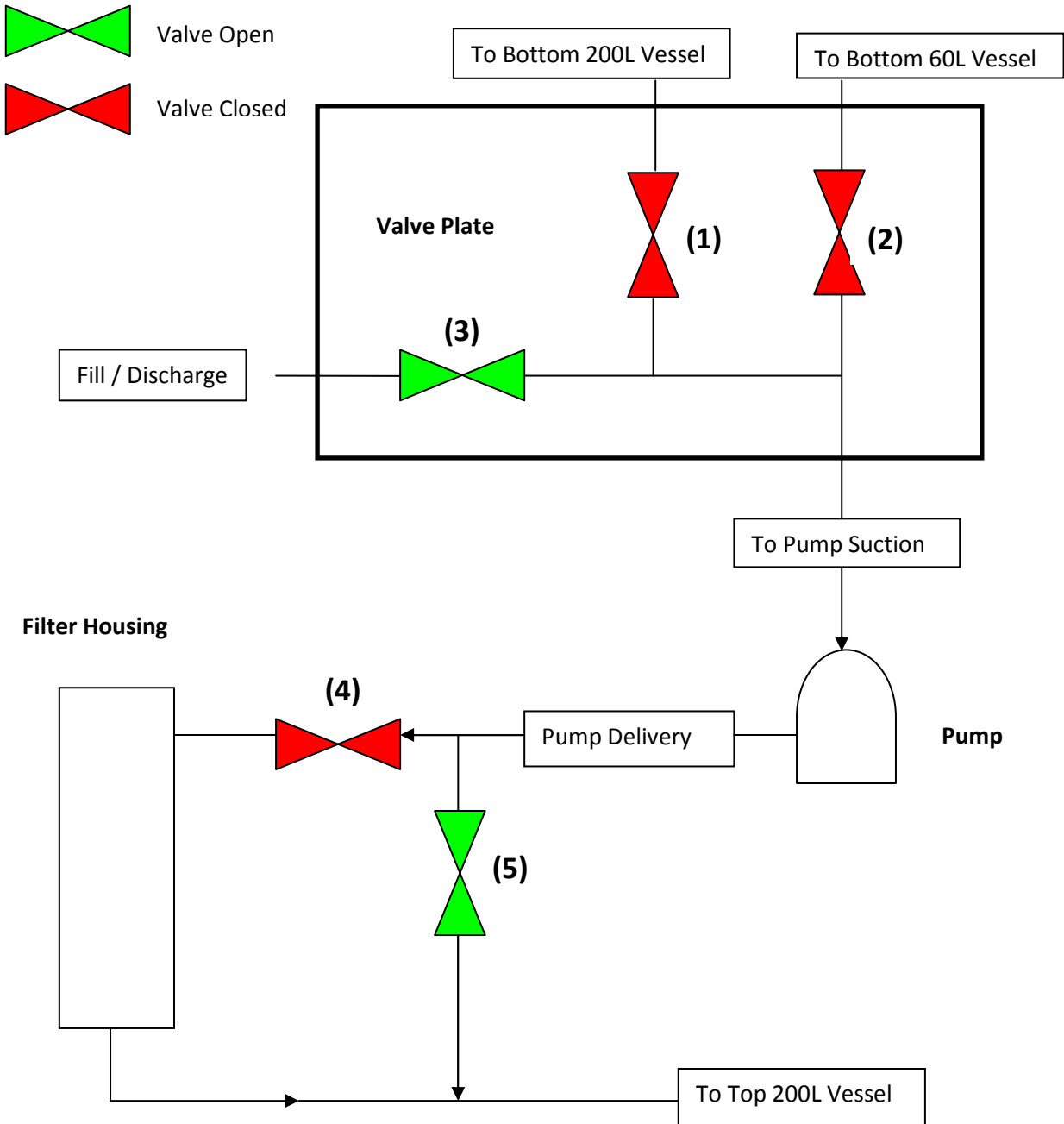
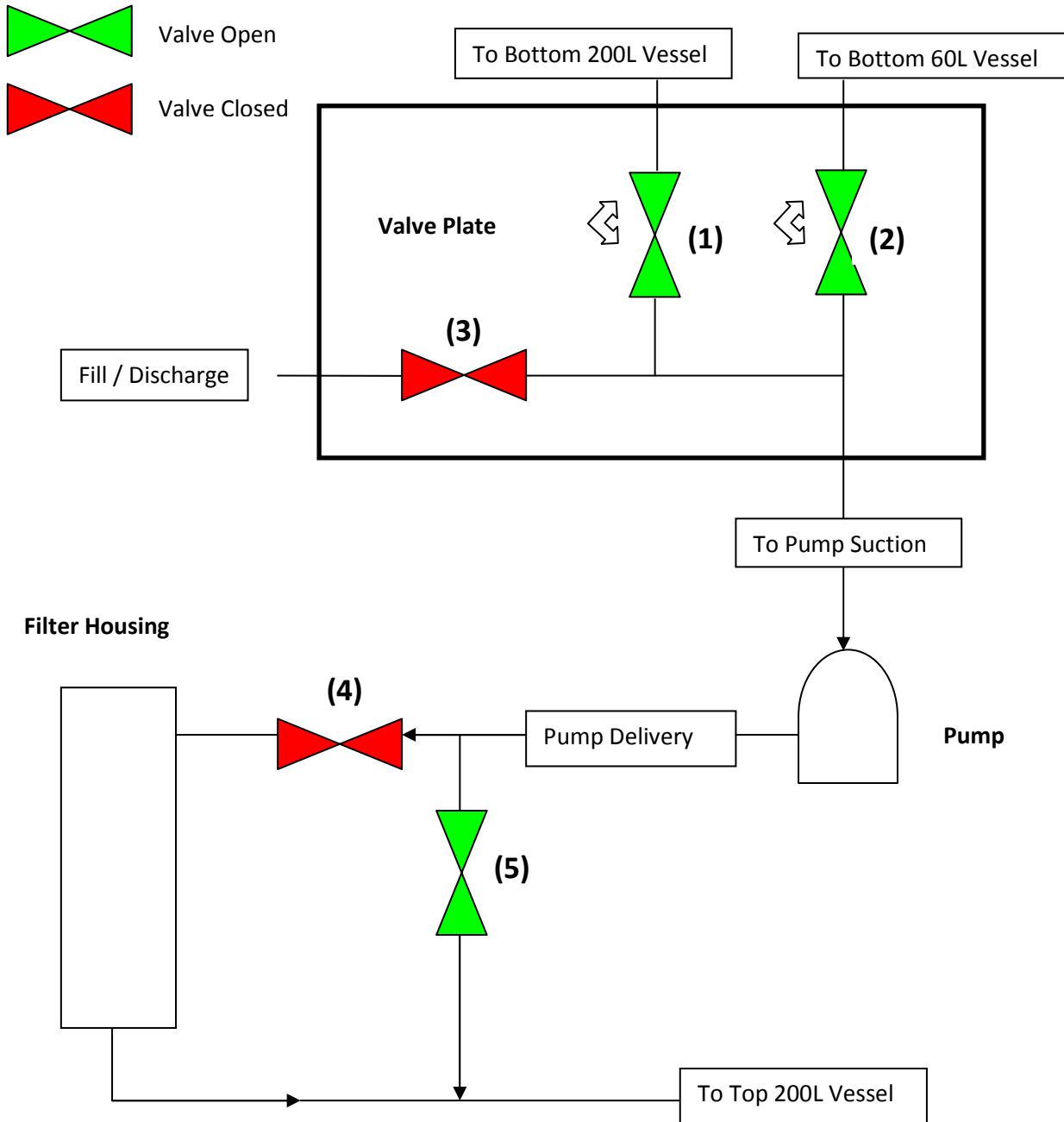


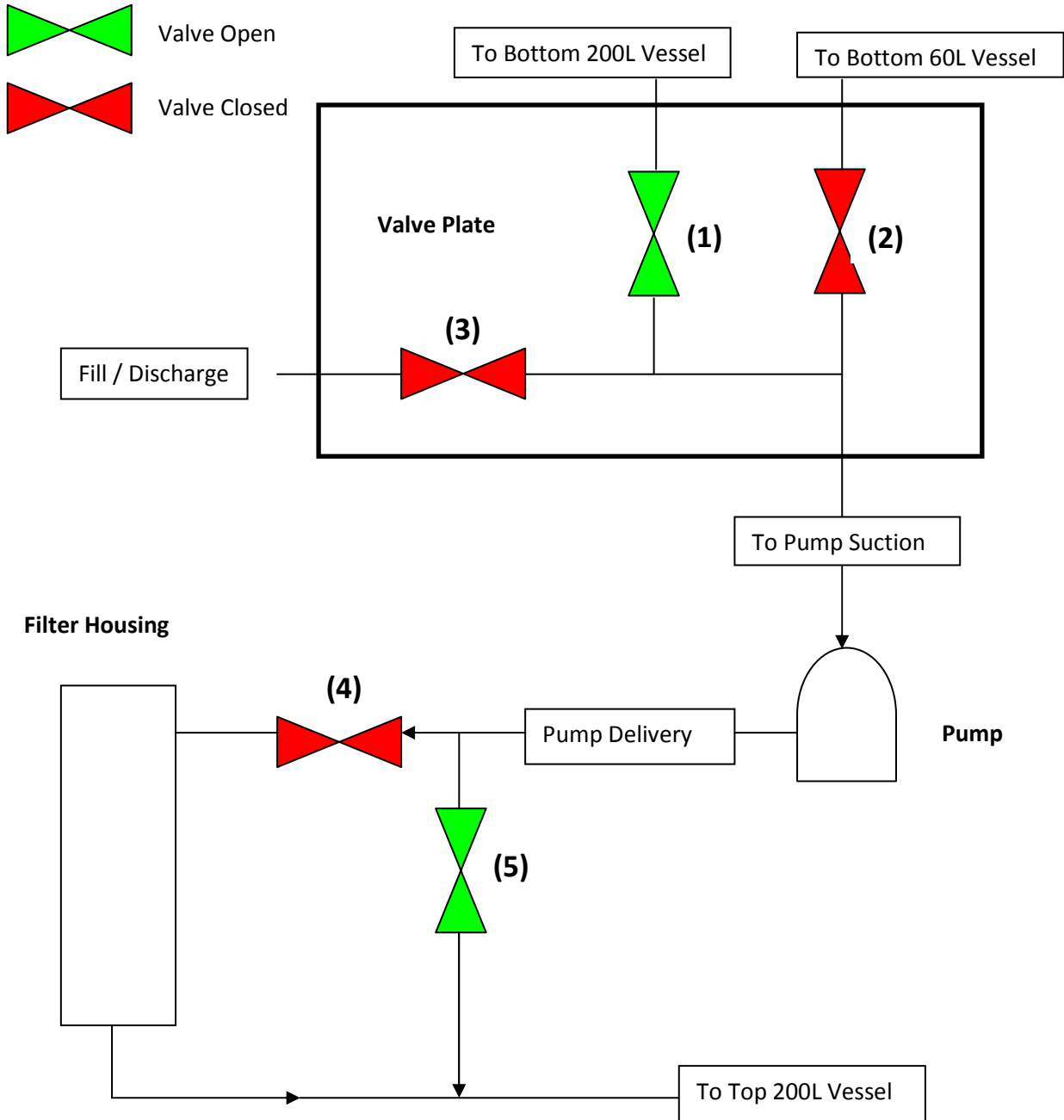
# Valve Diagram 1 – Loading the 200L Vessel with Oil



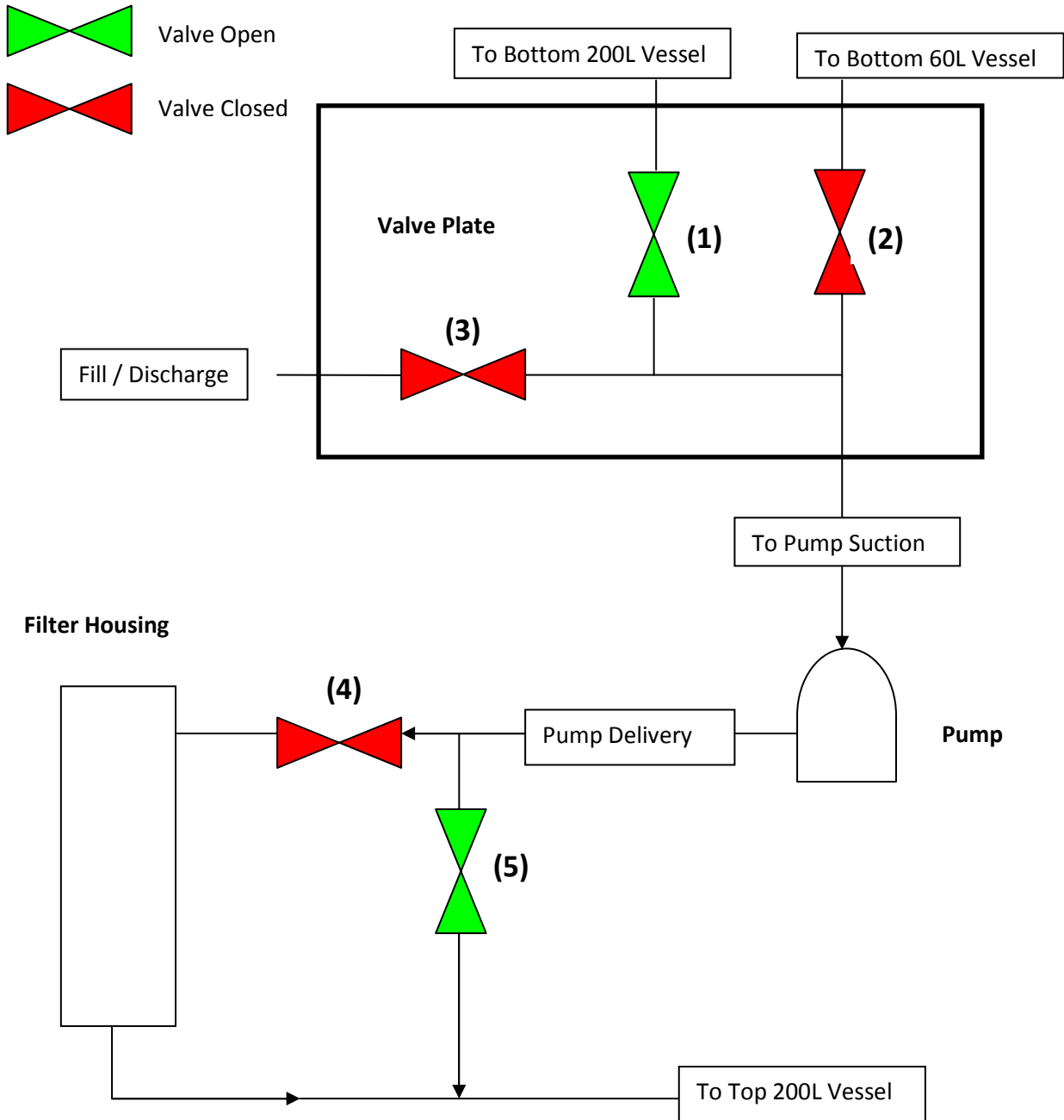
## Valve Diagram 2 – Transferring the Methoxide to the Oil



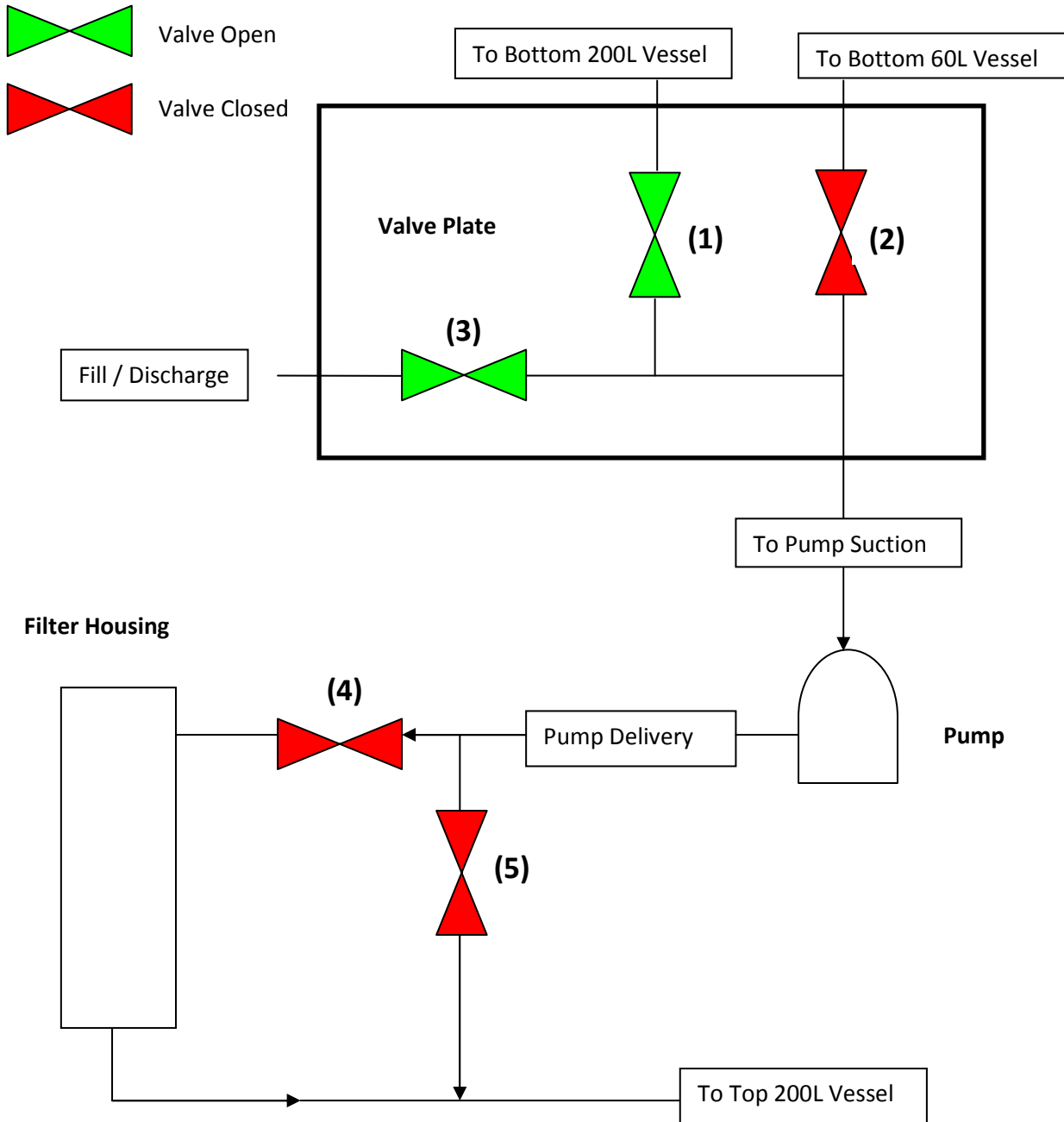
### Valve Diagram 3 – Circulating the Methoxide/Oil Mix & Dry washing



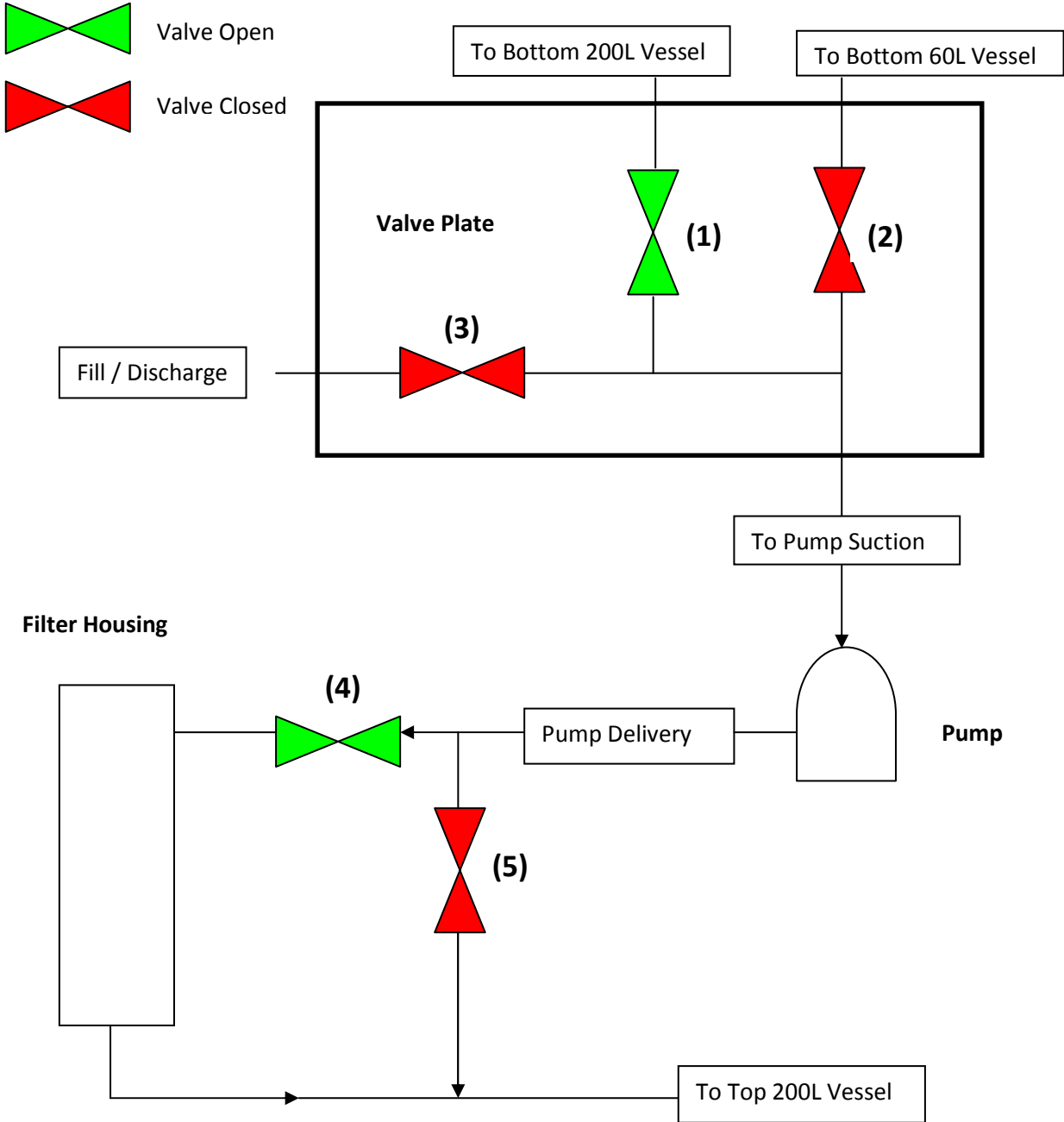
### Valve Diagram 4a – Removing Waste Glycerol (via Pump)



## Valve Diagram 4b – Removing Waste Glycerol (via gravity feed)



# Valve Diagram 5 – Biodiesel Filtration



## Valve Diagram 6 – Discharging End Biodiesel

